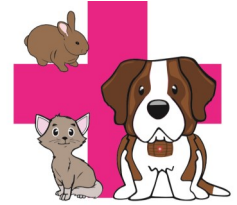


St Bernards Buzz



ST BERNARDS ROAD
Veterinary Clinic

VOLUME 3, ISSUE 2

FEBRUARY 2017

www.stbernardsvet.com.au

Welcome Claire

We are very excited that Claire has joined our wonderful team at St Bernard's Road Veterinary Clinic. Claire brings loads of experience, as well as an amazing menagerie which includes Beaker the Emu (who thinks he is a sheep a chicken or a pony), Bertie the Sulphur Crested Cockatoo (who is 57 years old) and Edmund the Koala (who also assisted in her wedding). She also arrived at work last week with her juvenile python - who knows which of her critters will visit us next week.



Recognising heart disease in your pet

With Valentine's Day in February, there's never a better time to talk about your pet's heart health.

Knowing the early signs of heart disease can really make a difference to your pet's life. With medical help, we can start treatment early, your pet will feel better and in most cases live a longer life.

Heart failure affects the pumping mechanism of the heart and oxygenated blood does not travel around your pet's body effectively. This can have an impact on your pet's overall health as blood ends up pooling in their lungs and/or abdomen leading to detrimental changes in other organs.

Cats are very good at hiding signs of heart disease (and it's often harder to pick up these changes at home as we don't tend to take our cats for a walk around the block!).

The signs to look out for in both dogs and cats:

- Laboured or fast breathing - the most common sign in cats
- An enlarged abdomen
- Weight loss or poor appetite

Signs to look out for in dogs only:

- Coughing, especially at night
- A reluctance to exercise and tiring more easily on walks
- Weakness or fainting associated with exercise

If we are concerned about your pet's heart we will initially recommend X-rays and an ultrasound of the heart. An ECG or further examination with a heart specialist may also be required.

Thankfully we have a number of medications available to help improve your pet's heart function and management of heart disease is advancing quickly.

If you think your pet is showing one or more of the above signs, it is important that we see them for an examination, as early treatment can help your pet lead a longer and happier life.



**HEARTWORM
TRANSMISSION
MOSQUITO**

When an infected mosquito feeds on your pet's blood, the heartworm larvae enter the blood stream. These larvae mature into worms that can reach up to a scary 30 cm in length!

The worms can eventually become lodged in your pet's heart leading to heart failure. It is at this point that the disease can be fatal. Dogs are more commonly affected by heartworm disease but cats may also be at risk.

Prevention of heartworm is far better than an attempt at a cure but choosing the right heartworm medication can be confusing, especially with so many options on the market.

You need to be aware that many of the intestinal 'all wormer' tablets do not prevent against heartworm infection.

There are topical treatments, oral treatments and a yearly injection for dogs. Ask us for the most suitable prevention for your pet - we will make sure your pet is protected.

